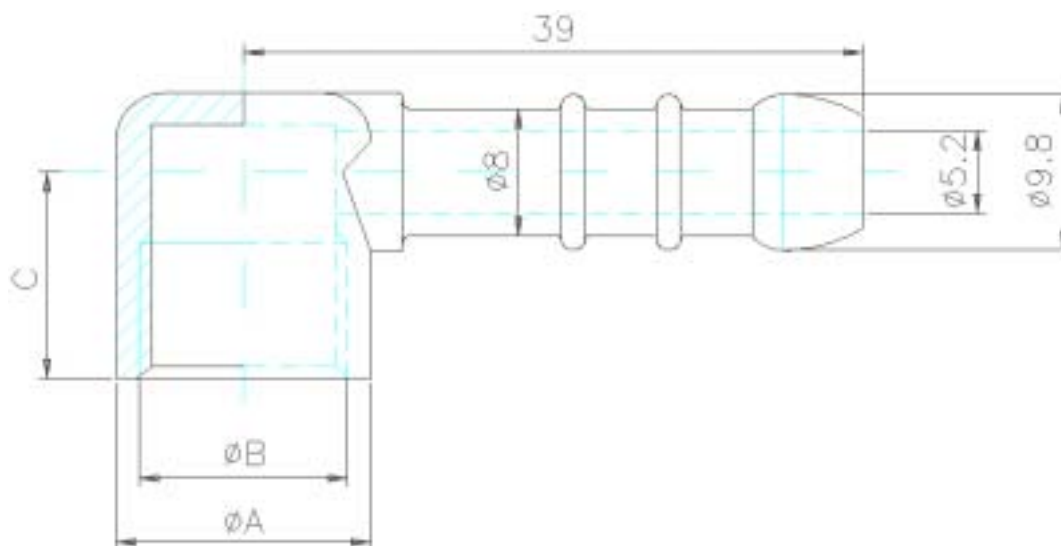




Portagomma ad angolo 8 IMQ in ZAMA (maschio - femmina)

Portagomma in ZAMA ZL0400 UNIEN 1774.

Conforme alle normative UNI 7141.



Rif. UNI-ISO 228/1 Filett. GAS cilindrica
UNI-ISO 7/1 Filett. GAS conica
UNI 5699 Filett. METRICA

Scritta in rilievo 0.3mm H.4mm "8"
Marchio IMQ-UNICIG 
Marchio Press. SEBINE 
Numero di impronta

Codice articolo	N. di disegno	⊙A	⊙B	C					Note
020.0372.0.00	02010500	⊙16	¼" Gas	13					Femmina
020.0376.0.00	02031000	⊙16	M12x1	13					Femmina
020.0412.0.00	02030900	M16x1,5	⊙10,2	22					Maschio
020.0415.0.00	02029201	⊙16	M10x1	13					Femmina
020.0418.0.00	02029300	⊙16	M8x0,75	13					Femmina
020.0420.0.00	02029200	⊙16	1/8" Gas	13					Femmina